



*PEO STRI TOWN
HALL*

WELCOME BACK!



Please submit your questions during the presentation using the Q&A function in Microsoft Teams!



01



REVIEW OF FY25

PEO STRI'S FY25 IMPACT

2025



- ❑ Managed 370+ Products
 - ❑ 200 Security Cooperation Efforts across 62 Nations
- ❑ Manpower Strength: ***1,137** Employees (DAC, MIL, Matrix, CME) – ***Post DRP**
- ❑ Total Annual Obligating Authority: **\$2.4 Billion** per Fiscal Year
- ❑ 4 x Combat Training Centers
- ❑ 429 CONUS & OCONUS Locations
- ❑ 700+ Ranges
- ❑ Provided full life cycle management of 300,000+ fielded training aids, devices and simulators across 400+ sites
- ❑ Army provider of Threat Capability

Support:



Multi-Domain Operations (MDO) For
Acquisition
Analysis
Experimentation
Intelligence
Test & Evaluation
Training Modeling & Simulation
Domains

Technology Areas For
Directed Energy Electronic
Warfare Nuclear
Environment

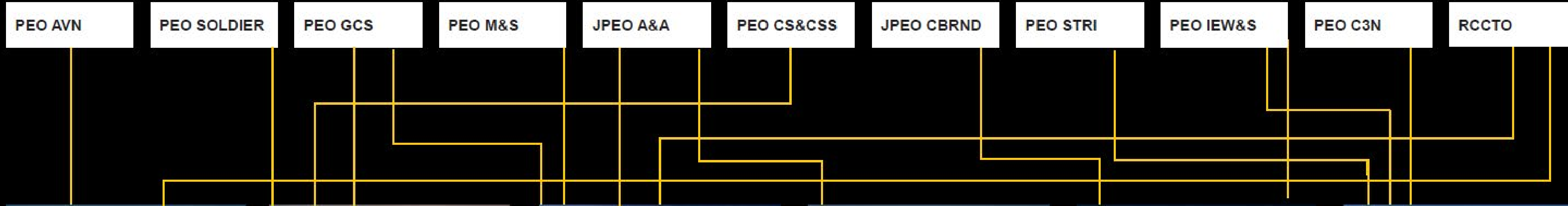
Threat Capabilities For
Cyber
System
Information Advantage



02



TRANSFORMATION



CSA / T2COM

SA / AAE

PAE

New PAE role is accountable of end-to-end processes across enablers, accelerating decision process and enabling greater cross-functional coordination

Sustainment

Test

Requirements

System Centers
R&D

Programing

Contracting

Acquisition

International

HORIZONTAL, CONCURRENT PROCESSES IMPROVE ADAPTABILITY, REDUCE DECISION CYCLE TIME

Procurement Authority	
Requirements Authority	
Acquisition Enabler	
Portfolio Acquisition Executive	



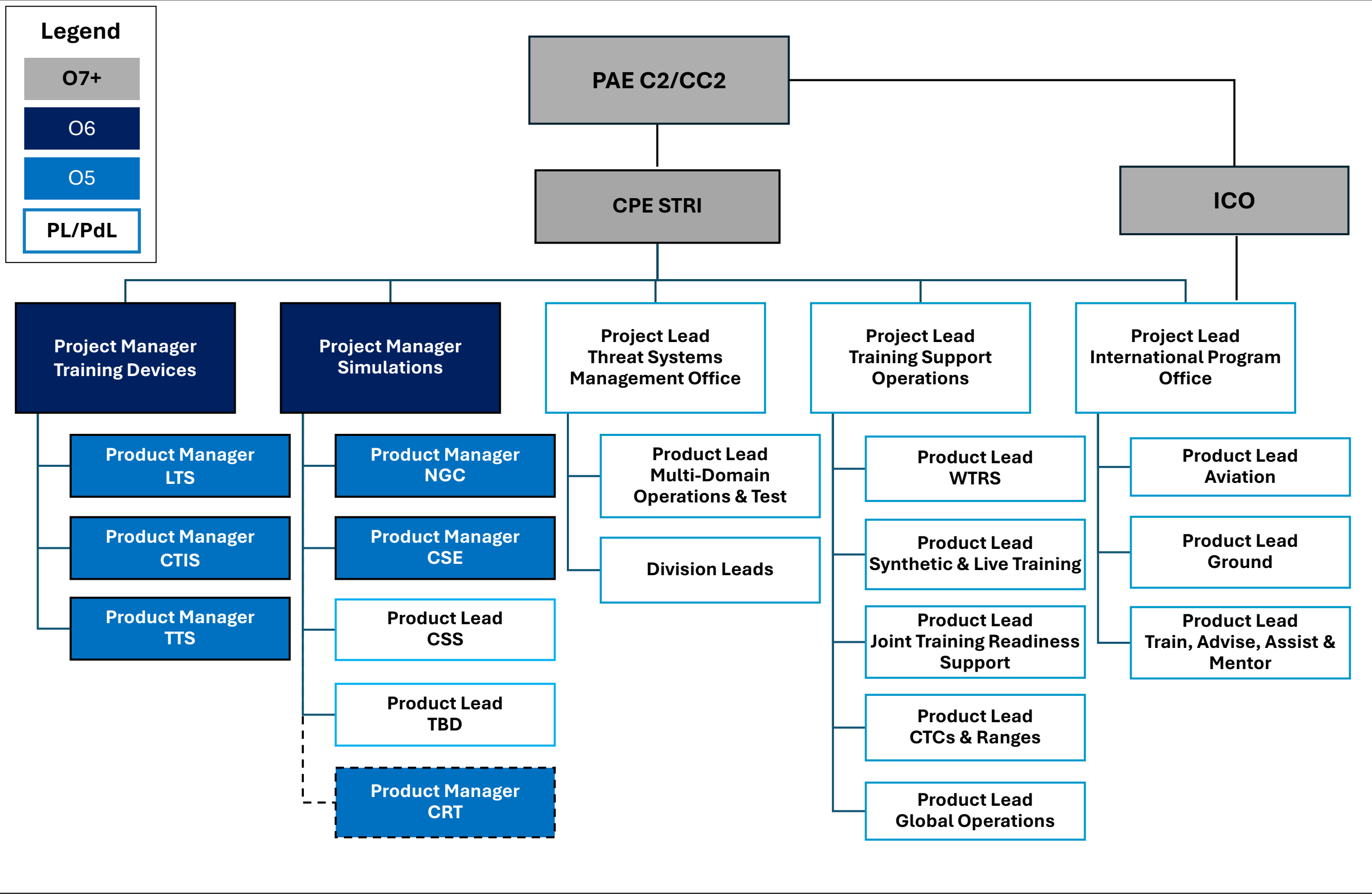
Objectives	Tier 1 metrics	Tier 2 metrics	Description and purpose
Operational effectiveness	Mission thread pass/fail rate	% of validated op. requirements successfully met in delivered capability	Assesses how well delivered capabilities enable warfighters to execute their missions in real operational contexts, incorporating measurements of success in meeting validated requirements, sustainment indicators (e.g., readiness), and integration across mission threads. Gauges high-level industry response to the impacts of the reform through tracking number of vendor proposals for contracts
		% of system Operational Availability (Ao)	
		Mean Time to Repair (MTTR)	
		Mean Time Between Failures (MTBF)	
		Number of programs with user feedback incorporated prior to operational test	
		Number of vendors competing for contracts by capability type	
	Percent of programs meeting / exceeding budget	% of programs that do not experience significant ¹ cost overruns	Quantifies how effectively PAEs / CPEs manage resources and sustain affordability over time
		Cost to field per system over time	
	Percent of programs with high risk / high reward elements	% of rapid prototyping or OTA efforts that result in fielded and scaled solutions	Measures Army's ability to pursue and field novel solutions by embracing informed risk and experimentation
Speed	Time between requirement identification and fielding	# of days between milestones A, B, and C compared to planned length	Measures time from requirement identification / validation to IOC or fielding for programs – a core indicator of effort's success in shortening time-to-capability and improving responsiveness to operational needs
		# of days to complete requirements process compared to planned length	
		# of days to complete contracting process compared to planned length	
		# of days to complete testing process compared to planned length	
		% of systems that integrate significant ¹ COTS components	
	Time between LOA and delivery	% of cases delivered on-time, based on planned schedule	Evaluates the Army's performance in delivering FMS cases on schedule
Org. engagement	Percent of positive org. satisfaction ratings	% reduction in average transition time from PIT to procurement	Tracks Army's speed of integrating cutting-edge, innovative technologies
		# of positive vs. negative responses in employee surveys ²	
		Employee turnover rate	
		Field feedback ratings on timeliness, quality, ³ and utility of delivered capabilities	

1. "Significant" threshold to be defined later, and on a percentage basis; 2. Survey questions use sliding scale from strongly disagree to strongly agree; 3. Recommended to include question: "I would prefer to have an 80% solution now compared to an 100% solution in three years"





Organizational Structure (FOC: Summer FY27)



Key Changes

- 30% CSL reduction from 3 to 2 O6/GS-15 PMs
- 30% CSL reduction from 8 to 5 O5/GS-14 PdMs
- PM Training Devices (TRADE):**
 - Align PD VTS to CPE Combat Logistics (team will stay in co-located on-site in Orlando, FL)
 - Align PM CT2 OPFOR capabilities to PM TRADE
- PM Simulations (SIM):**
 - Merge capabilities from PM SE and PM CT2
 - PdM CRT remains with PM SIM until transition to USCYBERCOM is completed in FY27 or FY28
 - Align PdM FTS to PM SIM
 - Merge PdM FTS with another PdM or PdL in FY27
 - Merge PdM SWS with another PdM or PdL in Summer 2026
- PL Threat Systems Management Office (TSMO):**
 - Align IMO to PL TSMO and re-designate as PdL MDO&T
 - No change to other Divisions
- PL Training Support Operations (TSO):**
 - No change to PdLs
- PL International Programs Office (IPO):**
 - Will be aligned to PAE C2/CC2 ICO and CPE STRI
 - No change to PdLs
- PL ETI functions re-aligned:**
 - ETI Governance Board established in HQ (CoS, CTO, CIO and Chief Engineers)

Timeline

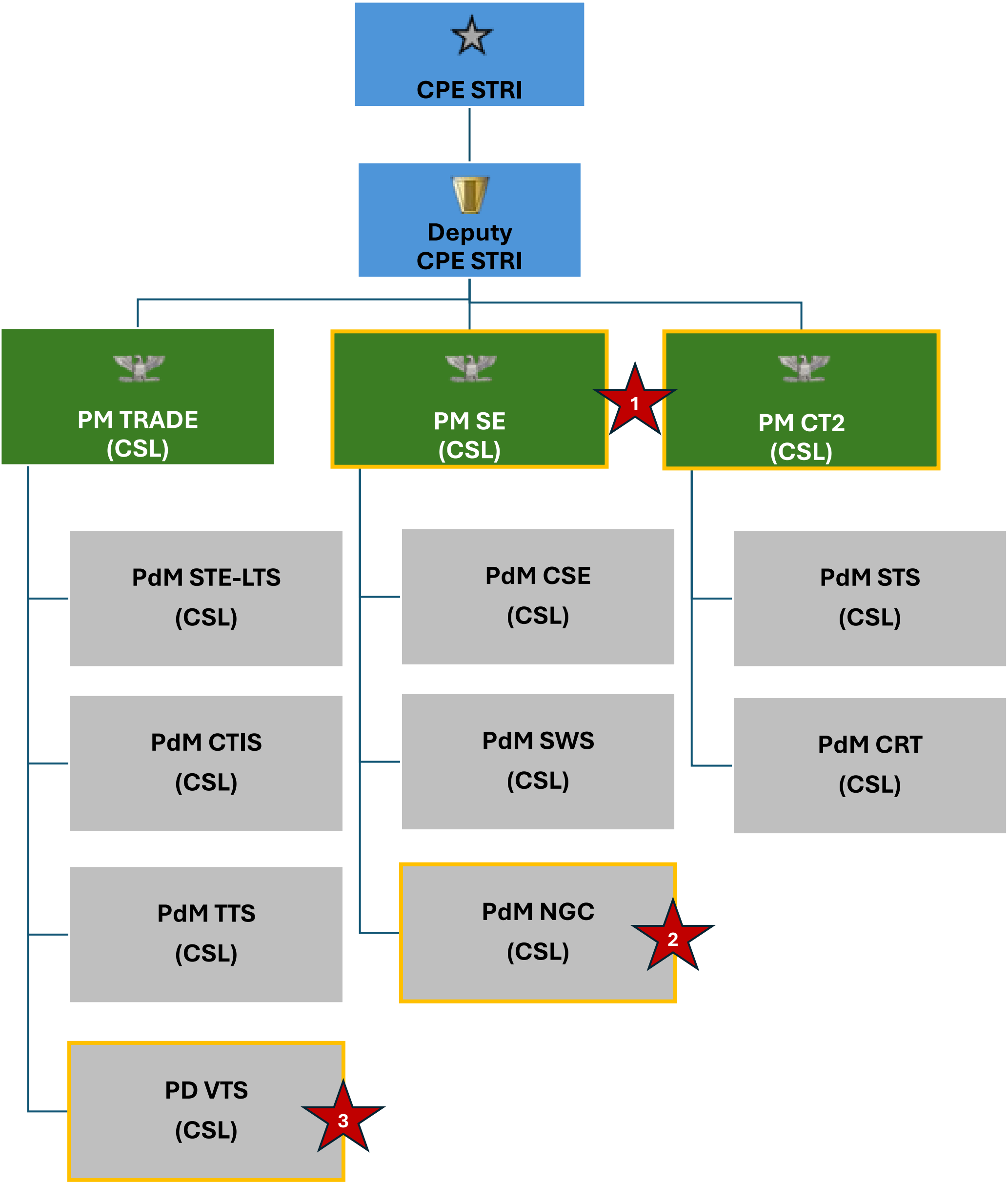
- Phase I:** (Nov. 2025 – Mar. 2026) Acquisition Reform roll-out and new PAE construct, Shift from PEO to CPE STRI and begin alignment to PAE C2/CC2, begin internal transition planning.
- Phase II: IOC:** (Apr. 2026 – Sep. 2026) Execute transition plans for CSL mergers/re-alignments (PM SE and PM CT2). Stand up PM Simulations. Align TSMO as direct report to CPE. Re-align ETI functions and stand-up Governance Board.
- Phase III: FOC:** (Oct. 2026 – Sep. 2027) Execute transition plans for final CSL mergers/realignment (PdM FTS and PdM CRT).

Phase I: Nov. 2025 – Mar. 2026

1. Start transition planning for merge of PM SE and PM CT2 into PM Simulations (PM SIM)

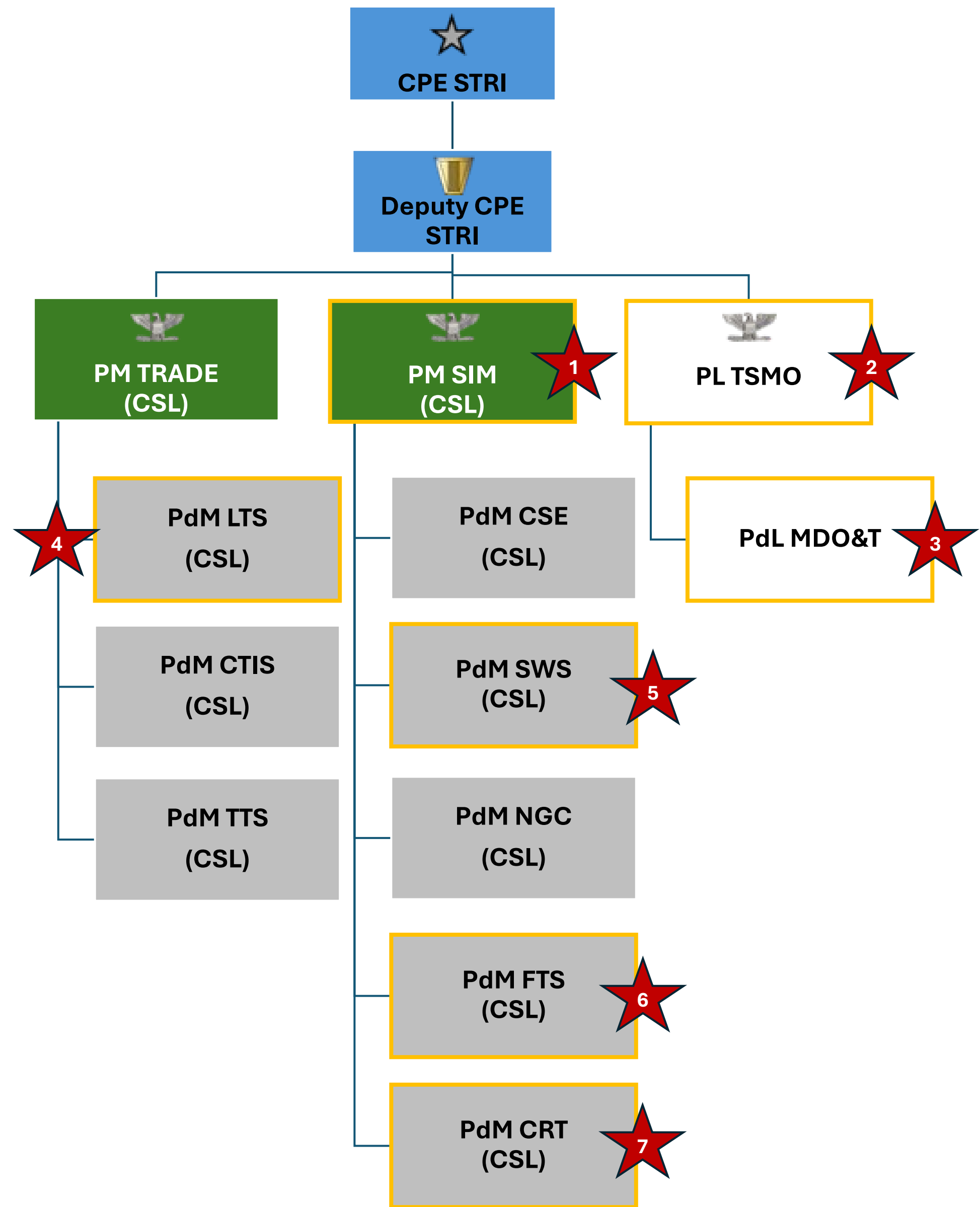
2. PD NGC designated as a CSL to PdM NGC

3. PD Virtual Training Systems begins transition to CPE Combat Logistics
 - Team will remain co-located with CPE STRI in Orlando, FL)



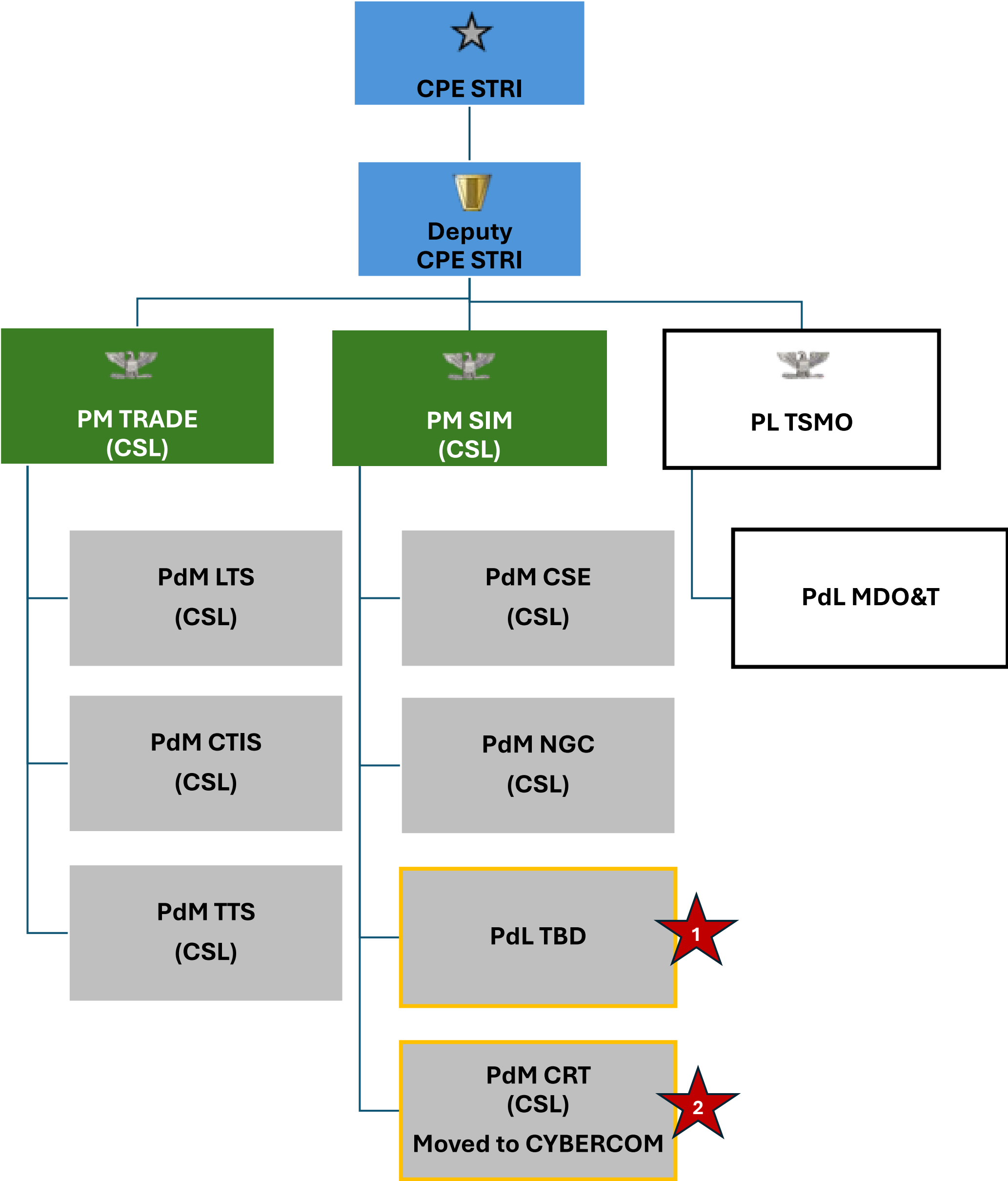
Phase II: Apr. 2026 – Sep. 2026

- 1. PM SE and PM CT2 merge complete, creating the new PM SIM
- 2. PL TSMO established as direct report to CPE
- 3. IMO is moved under PL TSMO and changed to PdL Multi-Domain Operations & Test (MDO&T)
- 4. PdM STE-LTS is changed to PdM LTS
- 5. PdM SWS is merged with another PdM or becomes a PdL
- 6. PdM FTS is moved to PM SIM
- 7. PdM CRT is moved to PM SIM



Phase III: Oct. 2026 – Sep. 2027

- 1. PdM FTS is merged with another PdM or becomes a PdL
- 2. PdM CRT transitions to USCYBERCOM





04



I/ITSEC



Orange County Convention Center – South (9899 International Drive, Orlando, FL 32819)

Exhibit Hall Booth: 2135

Quad Booth: 1333

ATTENDANCE: PM/PL/Director must approve attendance.

REGISTRATION: There are 5 types of registration:

1. DV Full;
2. Full GOV/MIL with Exhibitor;
3. CTR Exhibitor;
4. Full comp GOV/MIL; and
5. Full cost CTR.

#1-3 Have been identified and will be registered by STRI.

#4-5 Must self-register using the link provided in the Area-wide email.

TRANSPORTATION: UNLESS PRE-AUTHORIZED PER MISSION, personnel must use the busses as their mode of transportation to/from the OCCC. PM/PL/Director must pre-approve DAC/MIL for POV mileage/tolls/parking reimbursement based upon need.



Show Schedule

Monday, 1 December 2025

0900-0945 Congressional Visit Exhibit Hall
0945 Congressional M&S Members (PEO/DPEO)
1030-1200 Congressional M&S Caucus
1400-1800 Exhibits Open
1415-1545 Opening Ceremonies Rehearsal (PEO)
1600-1730 I/ITSEC Fellows Presentation
1730-1830 Scholarship Alumni Reception (App II)
1800-1830 Speakers Meeting for Paper, Special Events, PDW
1830-2015 VIP, Speakers Reception and Award Presentations (DV)

Tuesday, 2 December 2025

0645-0755 VIP Breakfast
0700-1800 Exhibitor & Conference Registration
0740-0750 Official Party Assembles (Annie Patenaude)
0800-1000 Opening Ceremony (Appendix III)
Break
1030-1200 Senior Leader Panel
1200-1330 Lunch
1200-1330 VIP Lunch Available (Reserved Tables DV)
1200-1830 Exhibits Open
1400-1500 PAE Town Hall
1600-1730 Sr Enlisted Panel

Service Quad
Rm S228 OCCC VIP
S330 CDGH
South Hall AB, North B
Hyatt Windermere
S330 EF
OCCC Southside Restaurant
S330 EF
OCCC Southside Restaurant

Hyatt - Celebration 5-6
OCCC South Lobby/220 DEF
Hyatt - Celebration 5-6
Hyatt - Windermere

Hyatt - Windermere
South Hall AB
South Hall B
South Hall AB
Army Room
S310AB

0630-TBD
0830-1000
0830-1000
0930-1800
1200
1200-1330
1200-1700
1730-1900
1730-1900

I/ITSEC 5K Run/Walk/Roll
PM TRADE LIVE Panel
PM CT2 Test Panel
Exhibits Open
Banquet table reservations to Operations
Lunch (DV)
I/ITSEC Career Fair
International Reception
TalX – NTSA Reception, Next Big Thing (DV)

Wednesday, 3 December 2025

OCCC South Hall -Outside
S310CD
S330EF
South Hall AB
S220C
South Hall AB
S210 A
S310 Foyer
OCCC, Southside
Restaurant

Thursday, 4 December 2025

0700-1400 Leadership Orlando
0930-1500 Exhibits Open
1200-1330 Lunch (DV)
1300-1500 TSIS Update
1300 Awards Ceremony: Serious Games Challenge
1500-1600 Closing Ceremony Rehearsal (PEO/DPEO)
1730-1830 VIP/Awards Reception (invitation only)
1800-1900 Official Closing Banquet Reception
1900-2300 Dinner and Awards Banquet (DV ticket only)

S210 A
South Hall AB
South Hall
S330CDE
Booth 2801
Hyatt - Windermere
Hyatt - Celebration
Hyatt - Windermere
Hyatt - Windermere

WWW.IITSEC.ORG



Bus Schedule

MONDAY - 1 DEC			
Depart NSA Orlando Welcome Center	Arrive OCCC	Depart OCCC	Arrive NSA Orlando Welcome Center
7:00 ^{*†}	7:45	12:00 [*]	12:45
7:30	8:15	16:00	16:45
10:00 [*]	10:45	17:00 [*]	17:45
13:00 [*]	13:45	18:45 [*]	19:30

TUESDAY - 2 DEC			
Depart NSA Orlando Welcome Center	Arrive OCCC	Depart OCCC	Arrive NSA Orlando Welcome Center
7:00 ^{*†}	7:45		
7:15 [*]	8:00		
7:15	8:00		
8:00	8:45	12:30 [*]	13:15
8:30	9:15	13:30	14:15
9:00	9:45	14:00	14:45
9:30 [*]	10:15	14:30 [*]	15:15
10:00 [*]	10:45	15:00 [*]	15:45
10:30	11:15	15:30	16:15
11:00	11:45	16:00	16:45
11:30 [*]	12:15	16:30 [*]	17:15
12:00 [*]	12:45	17:00 [*]	17:45
12:30	13:15	17:45	18:30
13:00	13:45	18:45	19:30

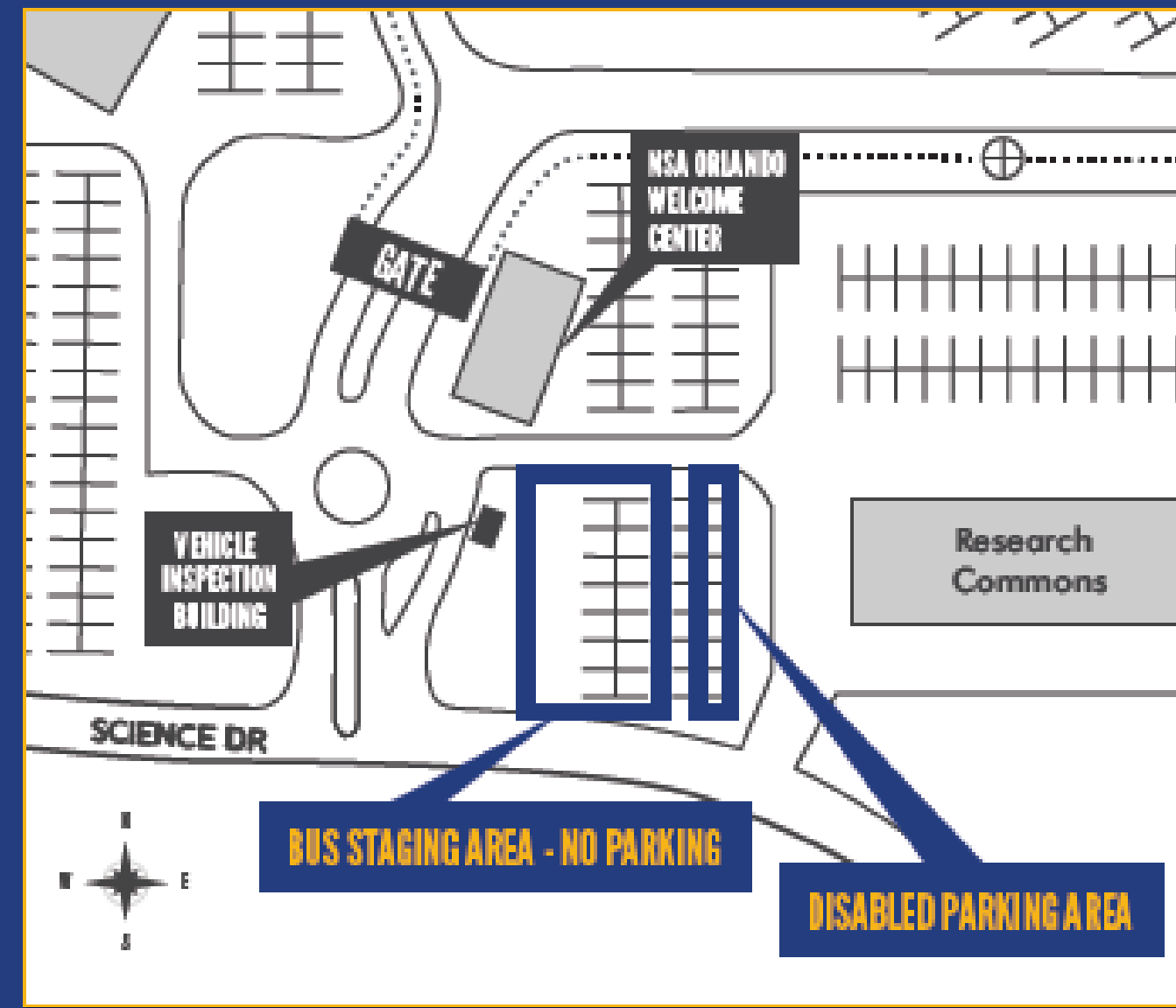
WEDNESDAY - 3 DEC			
Depart NSA Orlando Welcome Center	Arrive OCCC	Depart OCCC	Arrive NSA Orlando Welcome Center
7:00 ^{*†}	7:45	11:30	12:15
7:30	8:15	12:00	12:45
8:00	8:45	12:30 [*]	13:15
8:30 [*]	9:15	13:00	13:45
9:00	9:45	13:30 [*]	14:15
9:15	10:00	14:00	14:45
9:30 [*]	10:15	14:30 [*]	15:15
10:00	10:45	15:00	15:45
10:30 [*]	11:15	15:30 [*]	16:15
11:00	11:45	16:00	16:45
11:30 [*]	12:15	16:15	17:00
12:00	12:45	16:30 [*]	17:15
12:30 [*]	13:15	17:00	17:45
13:00	13:45	17:45 [*]	18:30
		18:30	19:15

THURSDAY - 4 DEC			
Depart NSA Orlando Welcome Center	Arrive OCCC	Depart OCCC	Arrive NSA Orlando Welcome Center
7:30 ^{*†,2}	8:15	12:00 [*]	12:45
7:45	8:30	12:30	13:15
8:00	8:45	13:30	14:15
8:30	9:15	14:00 [*]	14:45
9:00 [*]	9:45	14:30	15:15
9:30	10:15	15:30	16:15
10:30	11:15	16:00	16:45
11:30	12:15		

Times as of 16 NOV

BUS STAGING AREA

Buses run from NSA Orlando's Welcome Center to the Orange County Convention Center West Concourse and returns to the Welcome Center.



APPROVED BUS ENTRY PASSES



* Handicap Accessible † Priority to Exhibitors ¨ Priority to Student Escorts



04



CLOSING



Team PEO STRI,

As we approach the holiday season, we want to thank both you and your families for the hard work, dedication, and teamwork over the past year. It is no secret that the year 2025 brought us countless challenges and even a sense of uncertainty at times, but each of you rose to the occasion and we were able to accomplish some major milestones in the Army acquisition transformation process. We are grateful for each of you and the positive impact you have made on our organization.

We hope you get a chance to relax and create wonderful memories this holiday season. The year 2026 will bring us an opportunity to showcase the exciting work being done here in Orlando, and we look forward to working with our talented workforce of Army Soldiers, Civilians, and Contractors as we work to accelerate acquisition and provide the best possible products and services to our customers. Happy Holidays!



BG Christine A. Beeler,
Program Executive Officer

Mr. Lee A. James III,
Deputy Program Executive Officer

SGM Chuck Houston,
Senior Enlisted Advisor





QUESTIONS?



